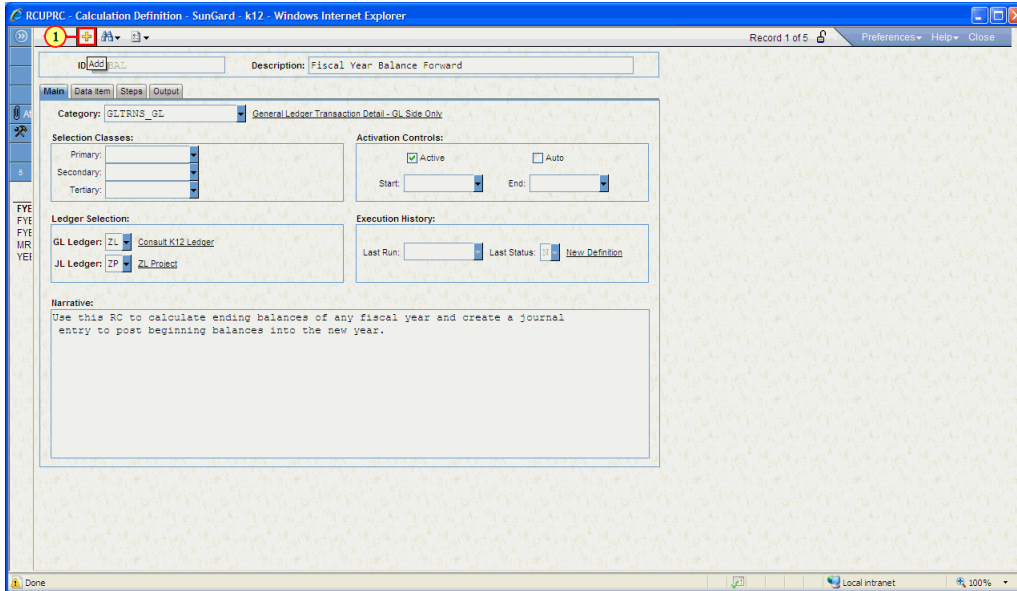


1.1 RC tutorial

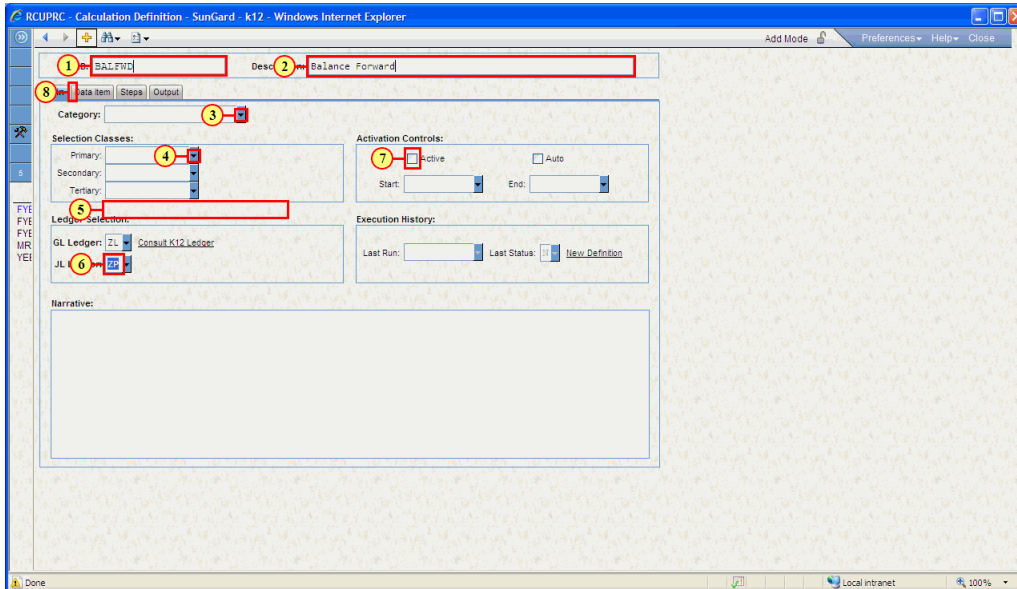
1.1.1 RCUPRC - Calculation Definition



(1) Click on **Add** +.

This places the screen in the Add mode so that a new RC can be defined.

1.1.2 Name RC



(1) The **ID** field is filled out.

Note:

The ID field must be unique. You should also create a standard naming convention. This will assist finding related RC's when opening the RCUPRC screen as the entity list is sorted in RCID order.

1.1.3 Provide RC Description

(2) The **Description** field is filled out.

1.1.4 Category Drop down

(3) Click on **Category Drop Down** and find the entry for the category that has the tables that you will need for the RC.

1.1.5 Select appropriate category

Select the **GLTRNS_GL** category. This category links the the tables: Glt_trns_dtl, Glk_key_mstr and Glo_obj_mstr.

Explanation: These three tables will provide all of the information that we will need in order to perform the balance forward calculation.

1.1.6 Select Class selection

(4) Click on **Primary Selection Class Drop Down**.

Note:

The Selection Classes are not required fields. We use them so that we can group RC's together for reporting.

1.1.7 Select Class selection

(5) Click on **Primary Class Entry** | GL General Ledger |.

1.1.8 Job Ledger

(6) The **Job Ledger** field is filled out.

1.1.9 Activation Controls

(7) Click on **Activation Controls "Active" check box** .

Note:

The activation controls flag controls if the RC can be ran or not. If the Active flag is not selected the RC can not be launched with the RCUTRC mask.

1.1.10 Press Enter to save the record

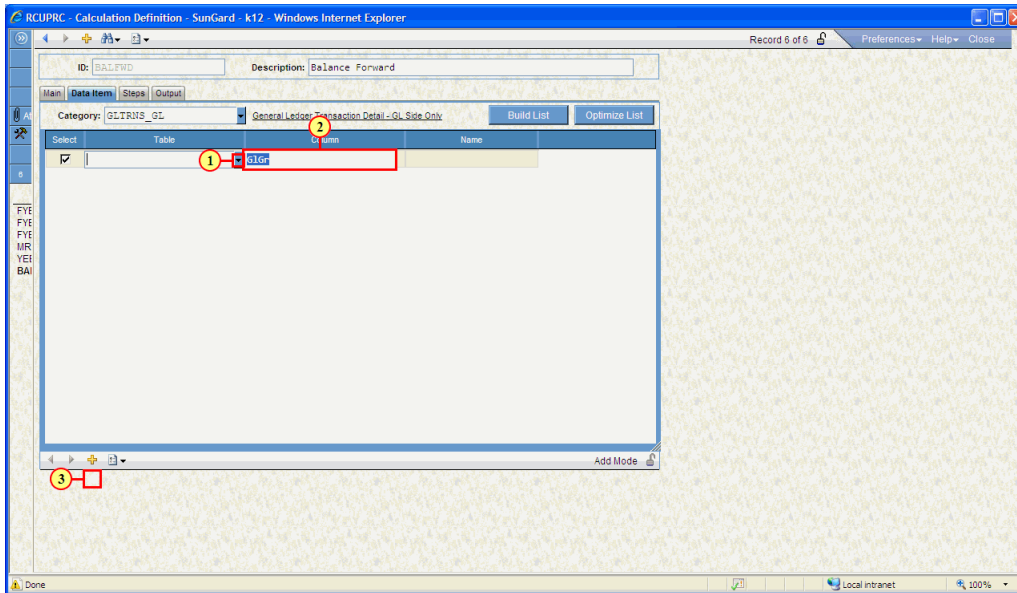
enter is now entered.

1.1.11 Data items tab

(8) Click on **Data Item**.

1.1.12 Data Item tab

1.1.13 Table selection drop down



(1) Click on **Table Selection Drop Down** ▾.

1.1.14 Select table

When you have the GLTRnsDetail table highlighted use the **tab** to select the highlighted item (you can also click on it with your mouse to select it.

1.1.15 Tab to column field

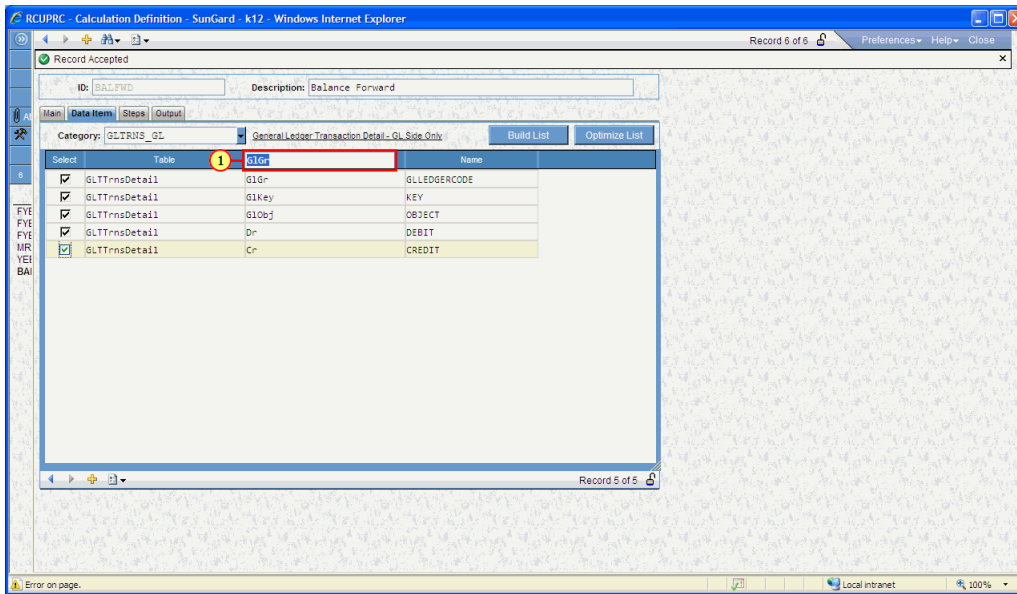
1.1.16 Column Selection

(2) The **Column** field is filled out.

1.1.17 New data item

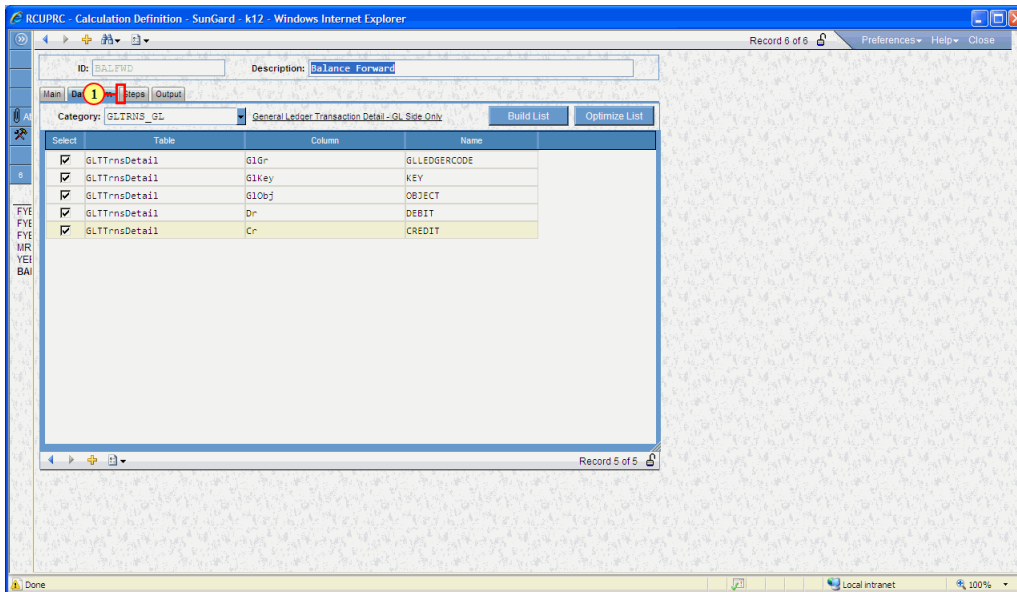
(3) Click on **Add** + to add the remaining data items that are needed for the RC.

1.1.18 RCUPRC - Calculation Definition



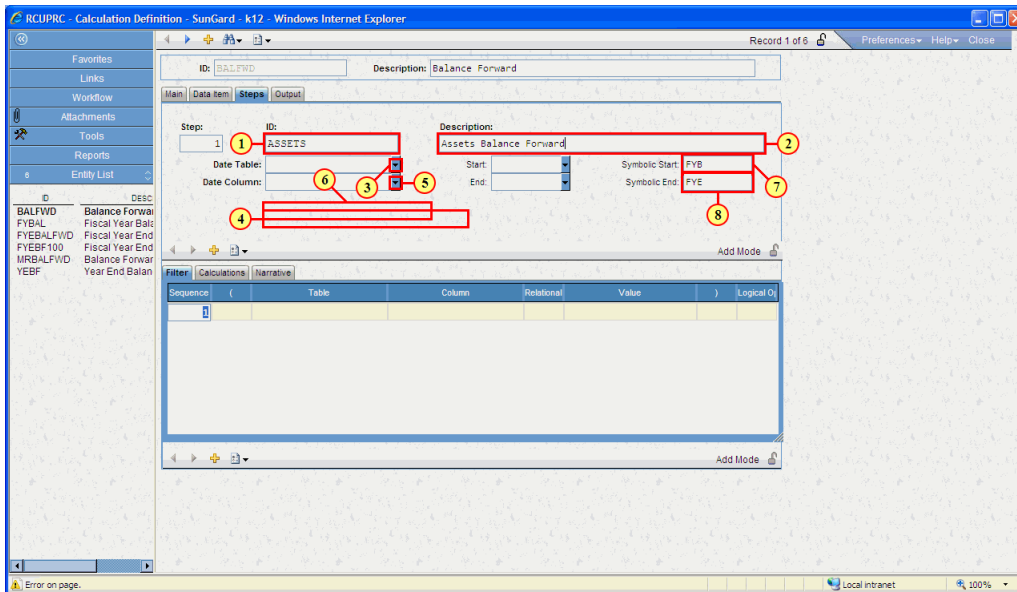
(1) This is all of the data items that need to be added for the balance forward calculation.

1.1.19 RCUPRC - Calculation Definition



(1) Click on **Steps** tab.

1.1.20 Step ID



(1) The **ID** field is filled out.

Note:

Each Step ID must be unique.

1.1.21 Step Description

(2) The **Description** field is filled out.

1.1.22 Date Table drop down

(3) Click on **Date Table Drop Down** ▼.

1.1.23 Date Table selection

(4) Click on **Entry for table** | GLTTrnsDetail Transaction |.

1.1.24 RCUPRC - Calculation Definition

(5) Click on **Date Column Drop Down** ▼.

1.1.25 Date Column Selection

(6) Click on **Date Column** | Date Date |.

1.1.26 Enter Symbolis Start Date

(7) The **Symbolic Start** field is filled out.

Note:

The Symbolic Start field supports the following Value
FYB - Fiscal Year Begin
QTB - Quarter Begin
MOB - Month Begin
CDT - Current Date

1.1.27 Enter Symbolic End Date

(8) The **Symbolic End** field is filled out.

Note:

The Symbolic Start field supports the following Value

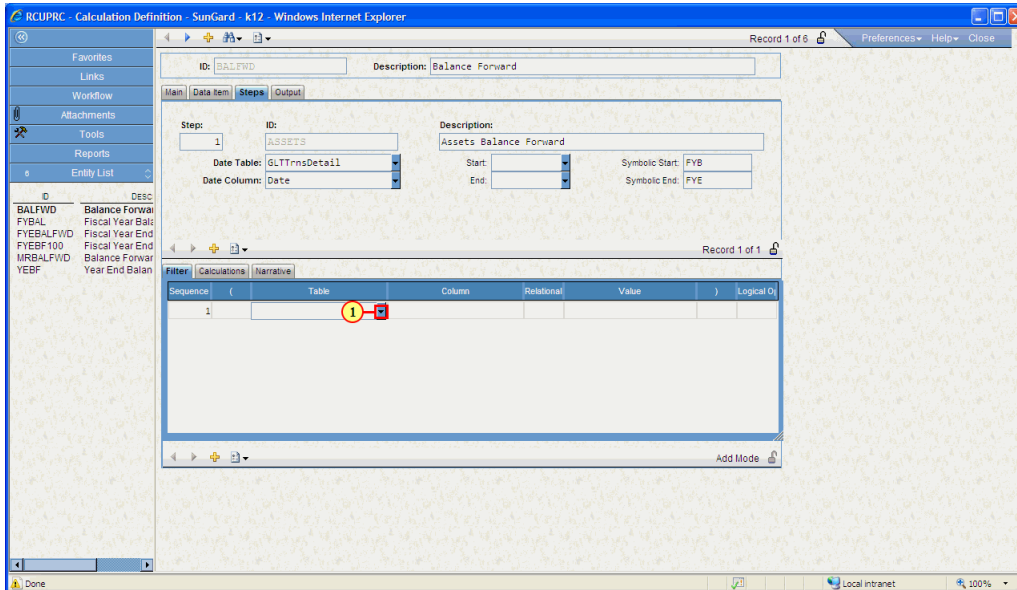
FYE - Fiscal Year End

QTE - Quarter End

MOE - Month End

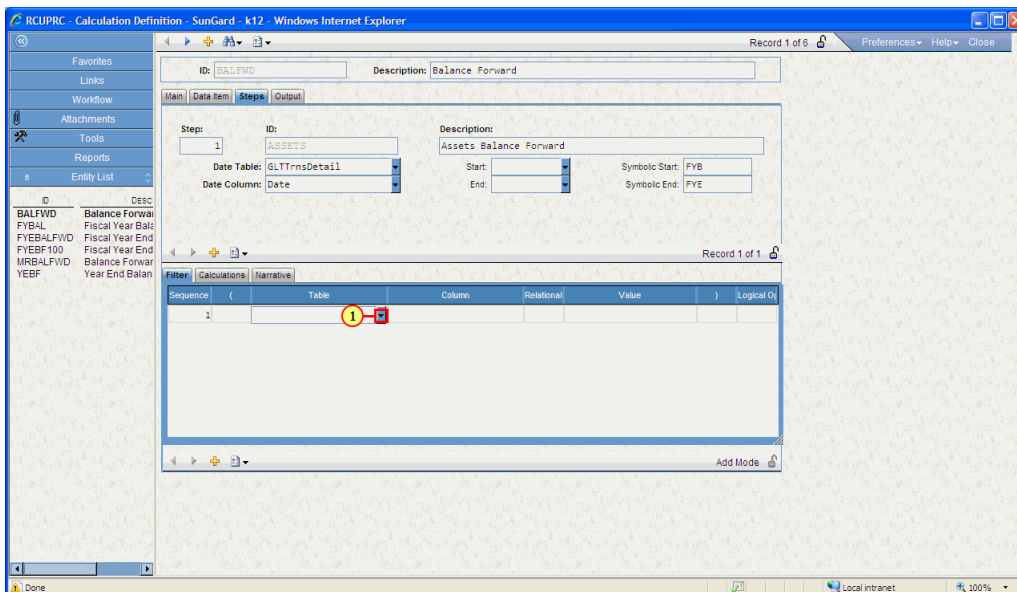
CDT - Current Date

1.1.28 Filter - Chose Table



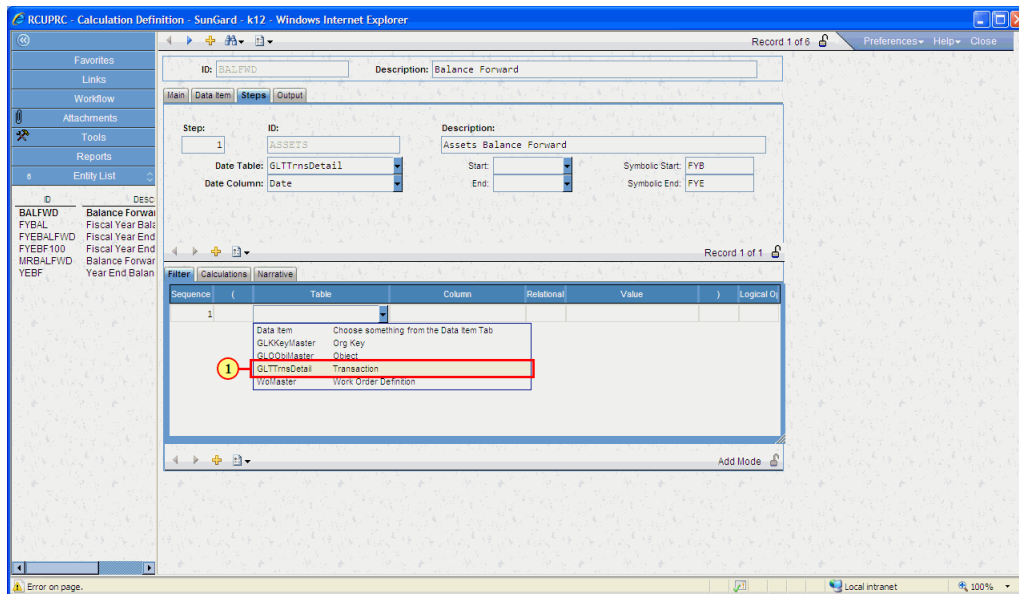
(1) The Filter is the place where we determine which records we want the Step to process. For the assets step we will setup the filter to limit by Ledger and Object Type.

1.1.29 Filter - Table Drop down



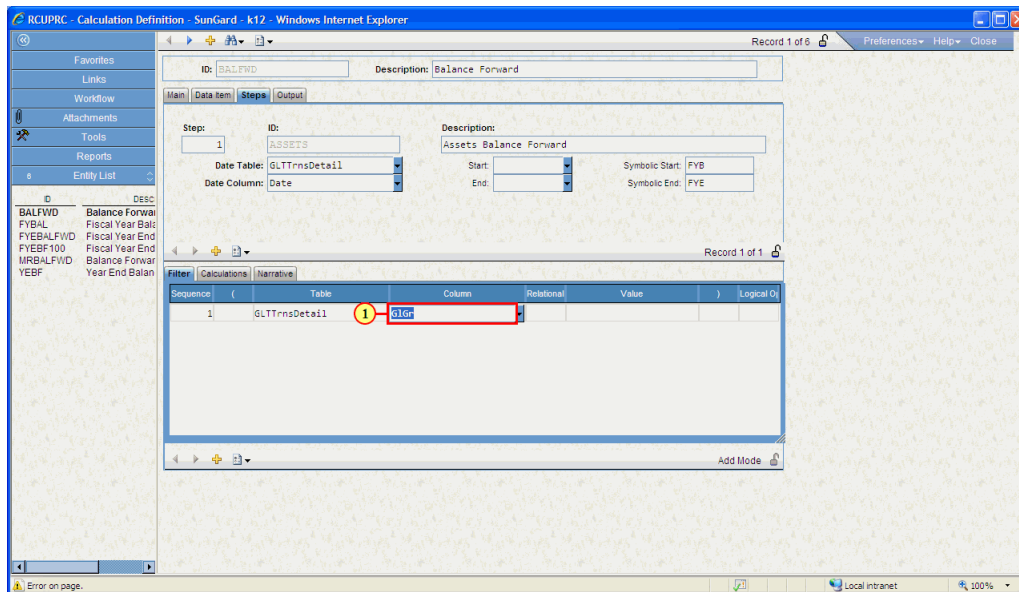
(1) Click on **Table drop down** ▼.

1.1.30 Table Selection



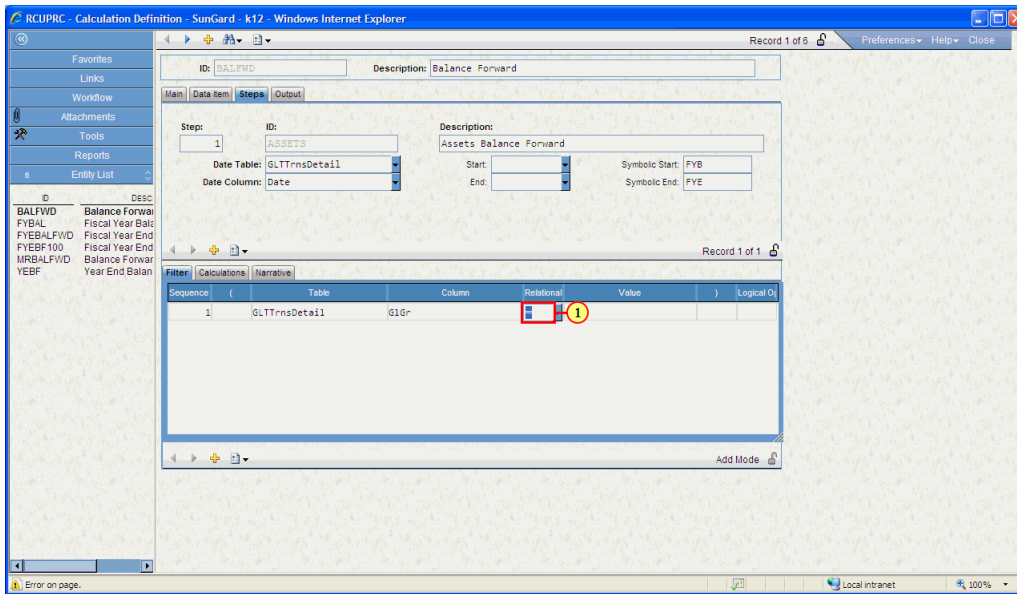
(1) Click on **table selection** **GLTTrnsDetail** Transaction

1.1.31 Filter - Column



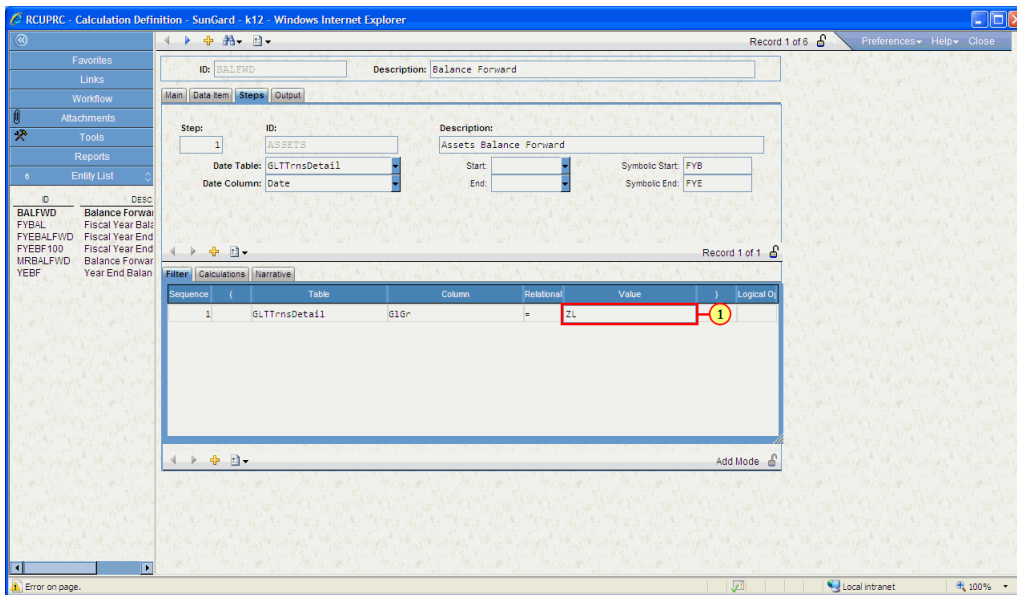
(1) The **Column** field is filled out.

1.1.32 Filter - Relational Operator



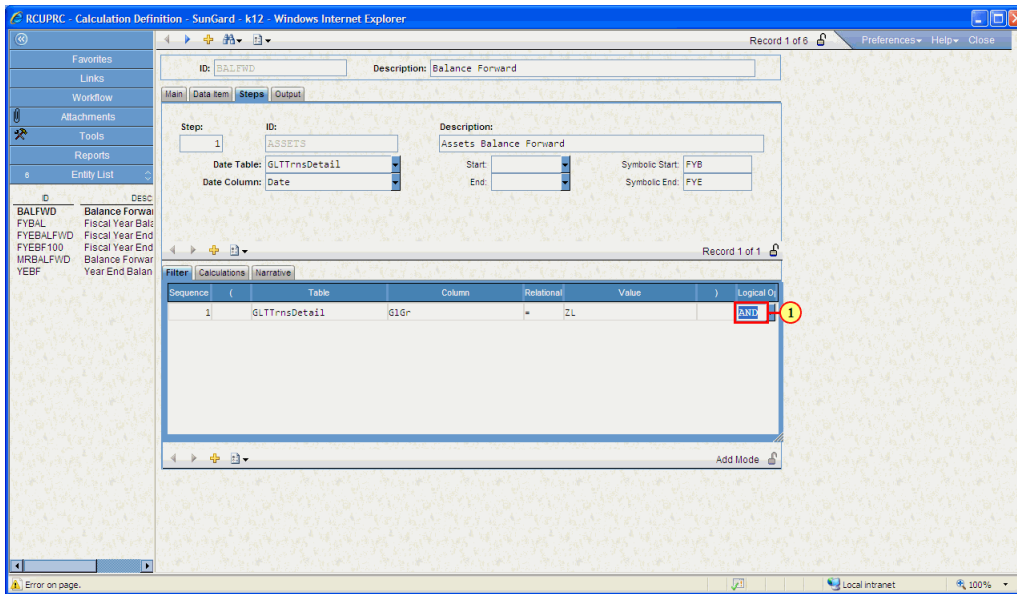
(1) The **Relational Operator** field is filled out.

1.1.33 Filter - Value



(1) The **Value** field is filled out.

1.1.34 RCUPRC - Calculation Definition

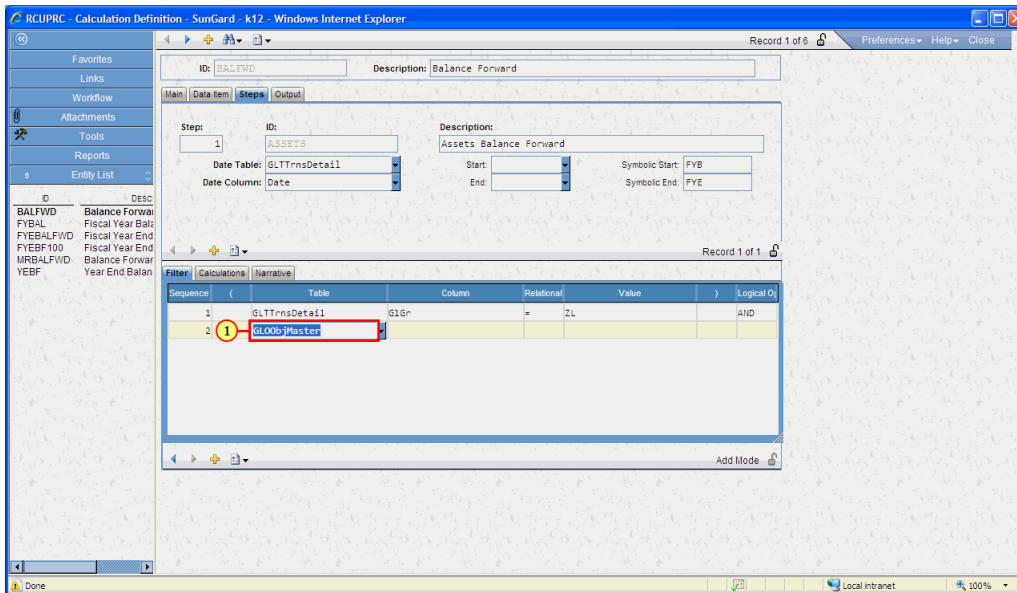


(1) The **Logical Operator** field is filled out.

Explanation:

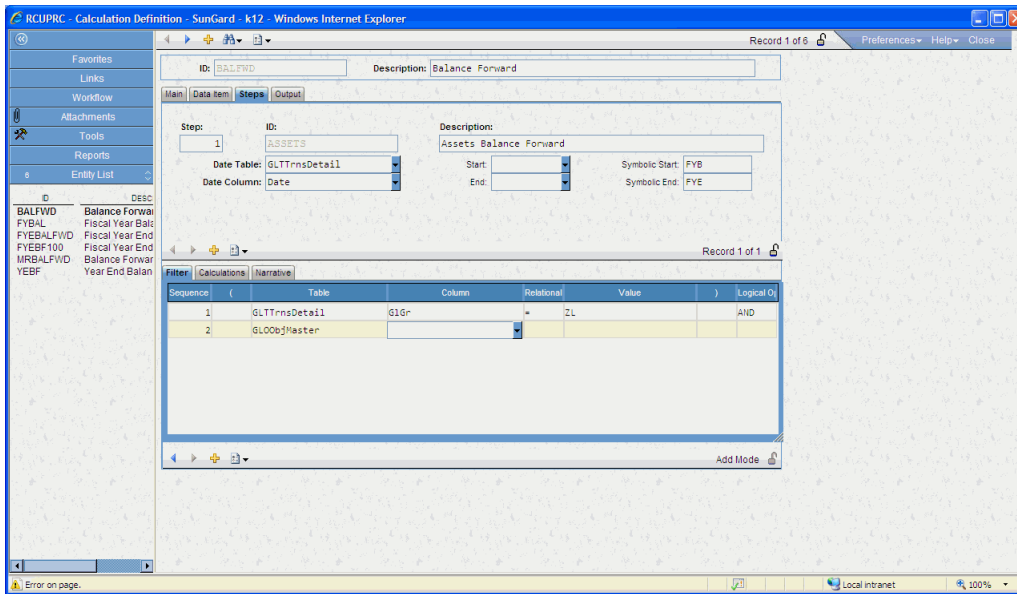
We use the logical operator "AND" because we want both of the statements that we are entering to be true for the record to be selected.

1.1.35 RCUPRC - Calculation Definition



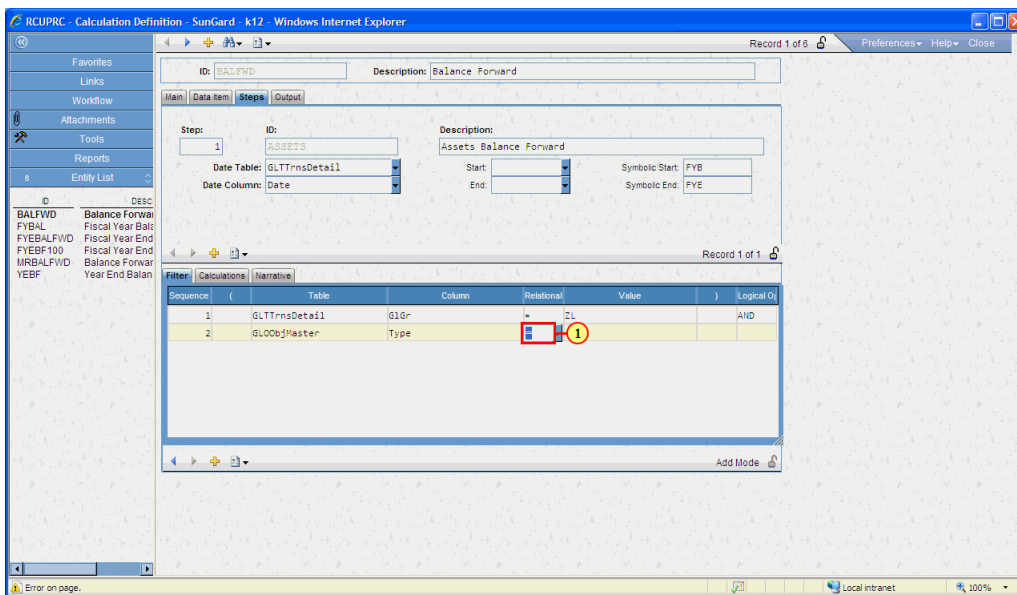
(1) The **Table** field is filled out.

1.1.36 RCUPRC - Calculation Definition



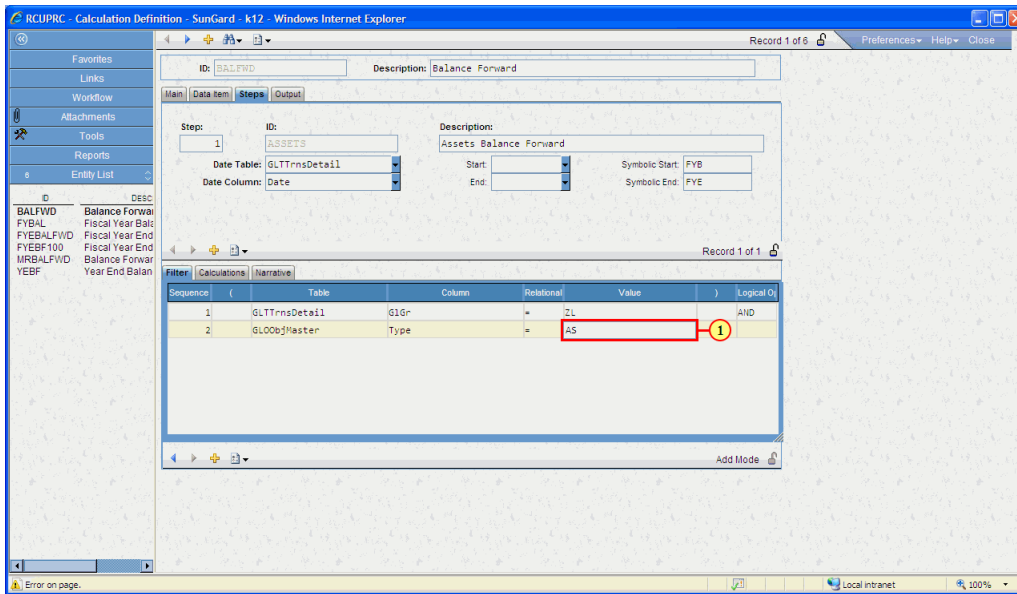
Type is now entered.

1.1.37 RCUPRC - Calculation Definition



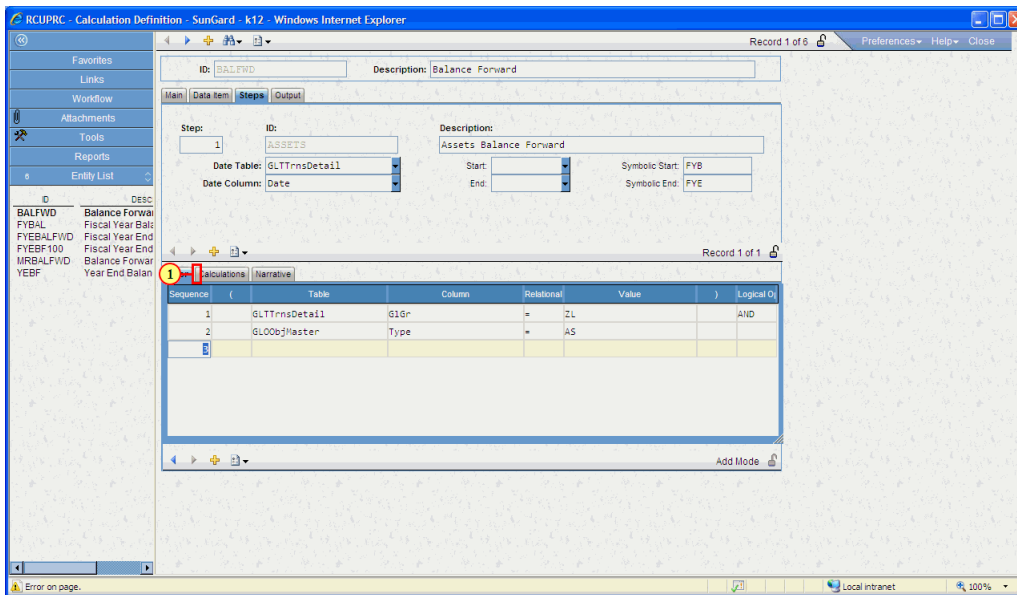
(1) The **Relational Operator** field is filled out.

1.1.38 RCUPRC - Calculation Definition



(1) The **Value** field is filled out.

1.1.39 RCUPRC - Calculation Definition



(1) Click on **Calculations**.

1.1.40 RCUPRC - Calculation Definition

RCUPRC - Calculation Definition - SunGard - k12 - Windows Internet Explorer

Record 1 of 6

Preferences Help Close

ID: BALFWD Description: Balance Forward

Main Data Item Steps Output

Step: 1 ID: ASSETS Description: Assets Balance Forward

Date Table: GLTrnsDetail Start: Symbolic Start: FYB

Date Column: Date End: Symbolic End: FYE

Record 1 of 1

Filter Calculations Narrative

Sequence: 1 Source: Value: Append

Global Flag: S Calculation value Specific to each output row processed Decimal Places: 2

Expression:

Rounding Control Level:

Add Mode

Error on page. Local Intranet 100%

1.1.41 RCUPRC - Calculation Definition

RCUPRC - Calculation Definition - SunGard - k12 - Windows Internet Explorer

Record 1 of 6

Preferences Help Close

ID: BALFWD Description: Balance Forward

Main Data Item Steps Output

Step: 1 ID: ASSETS Description: Assets Balance Forward

Date Table: GLTrnsDetail Start: Symbolic Start: FYB

Date Column: Date End: Symbolic End: FYE

Record 1 of 1

Filter Calculations Narrative

Sequence: 1 Source: Value: Append

Global Flag: S Calculation value Specific to each output row processed Decimal Places: 2

Expression:

Rounding Control Level:

Add Mode

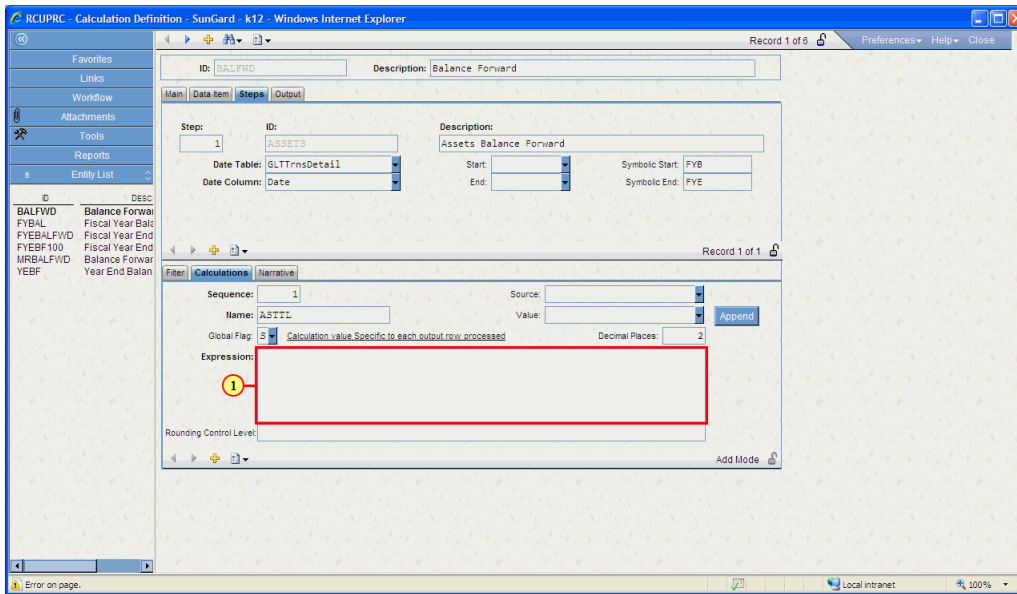
Error on page. Local Intranet 100%

(1) The **Name** field is filled out.

Note:

Each Calculation ID within a Step must be unique.

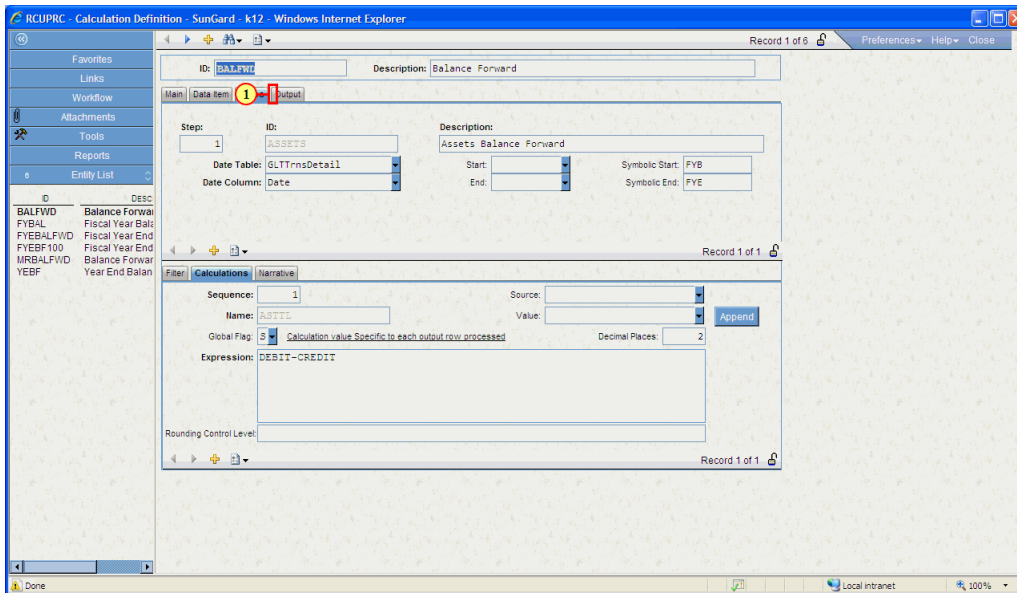
1.1.42 RCUPRC - Calculation Definition



(1) The **Expression** field is filled out.

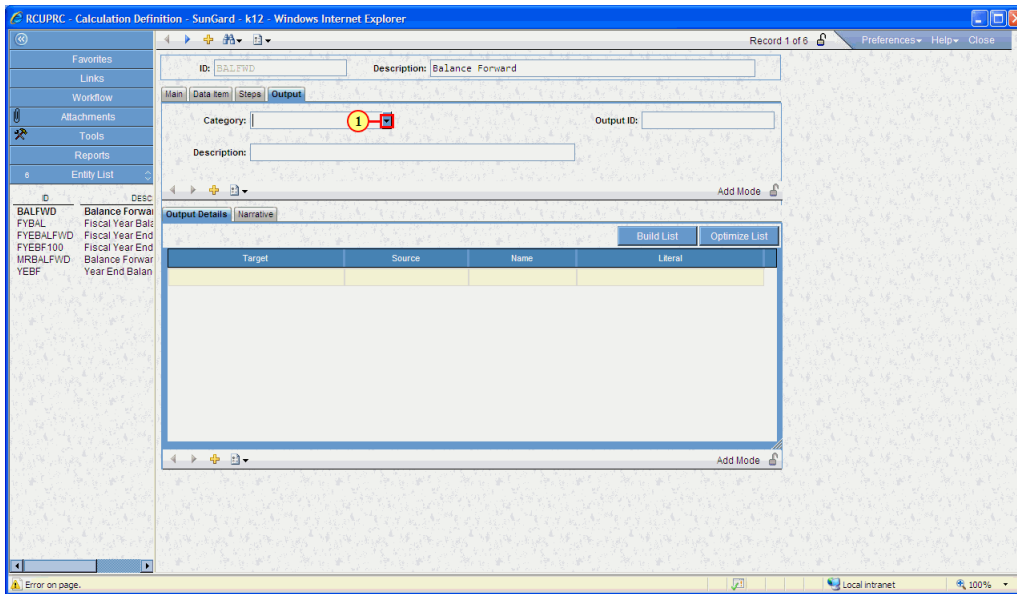
Since we are creating a balance forward for Assets the calculation should be Debit-Credit. That is because Assets have a normal Debit balance.

1.1.43 RCUPRC - Calculation Definition



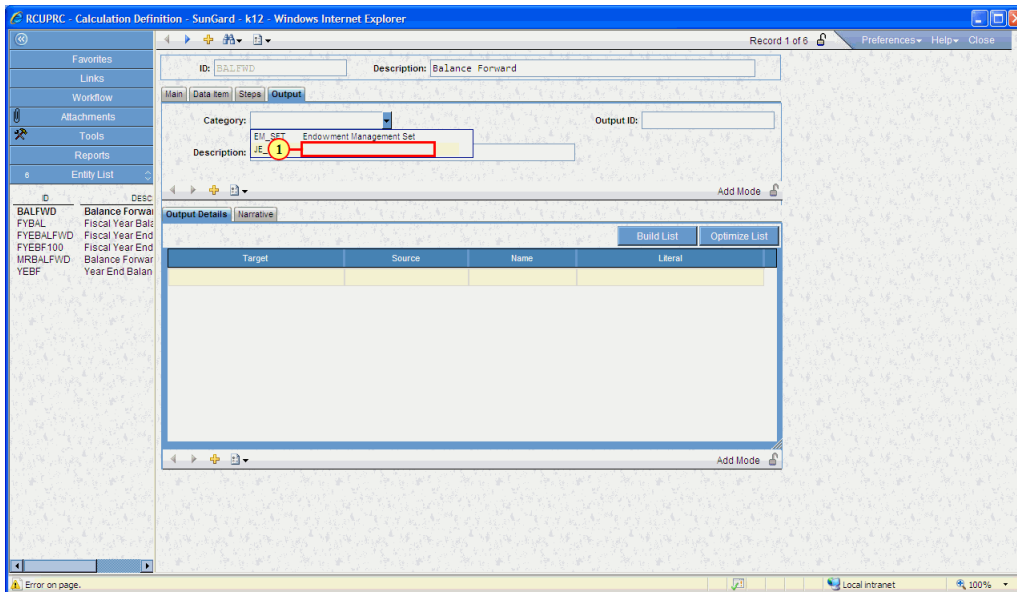
(1) Click on **Output Tab** Output.

1.1.44 RCUPRC - Calculation Definition



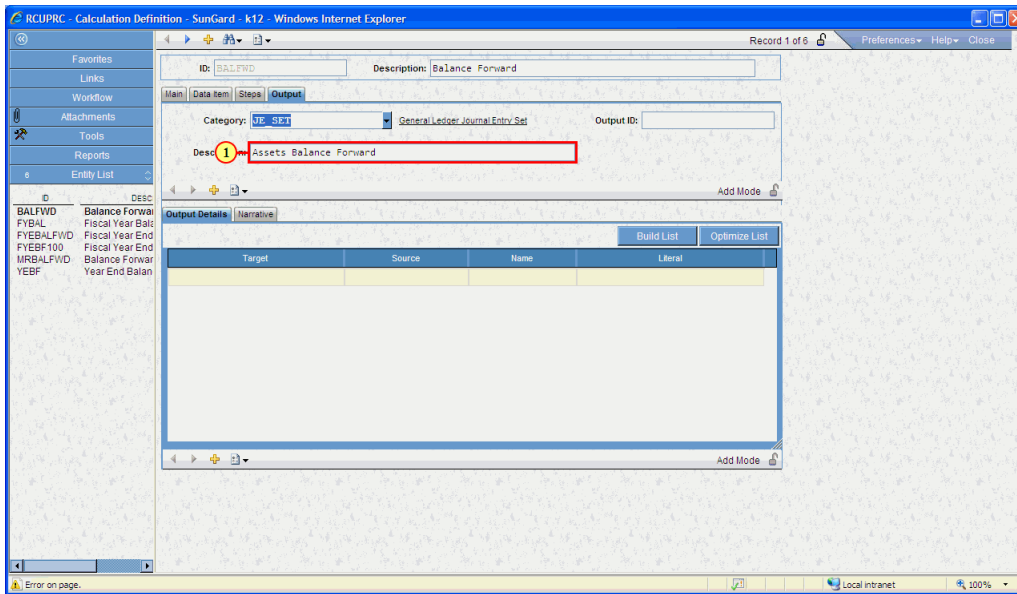
(1) Click on **Output Category Drop Down** ▾. We will want to Journal Entry Balance forward set from the calculation that is performed in the step.

1.1.45 RCUPRC - Calculation Definition



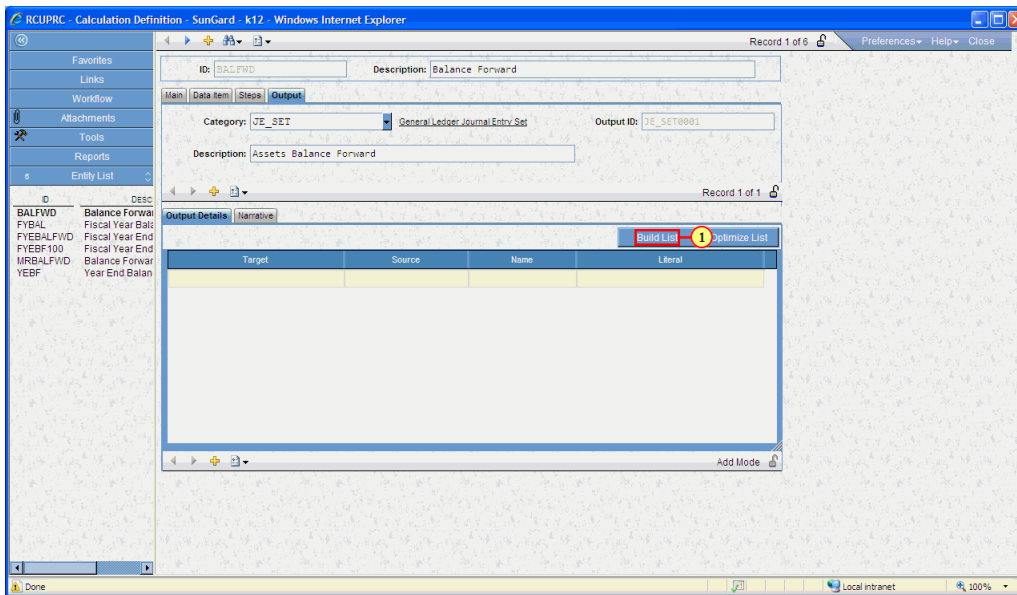
(1) The **Category** field is filled out.

1.1.46 RCUPRC - Calculation Definition



(1) The **Description** field is filled out.

1.1.47 RCUPRC - Calculation Definition



(1) Click on the **Build List** button.

Note:

The output is where we define what type of set will be created from the calculation performed in the various RC Steps. The items that we have available to us on the output is determined by the selection of values for the Source and Column or a literal value can also be used.

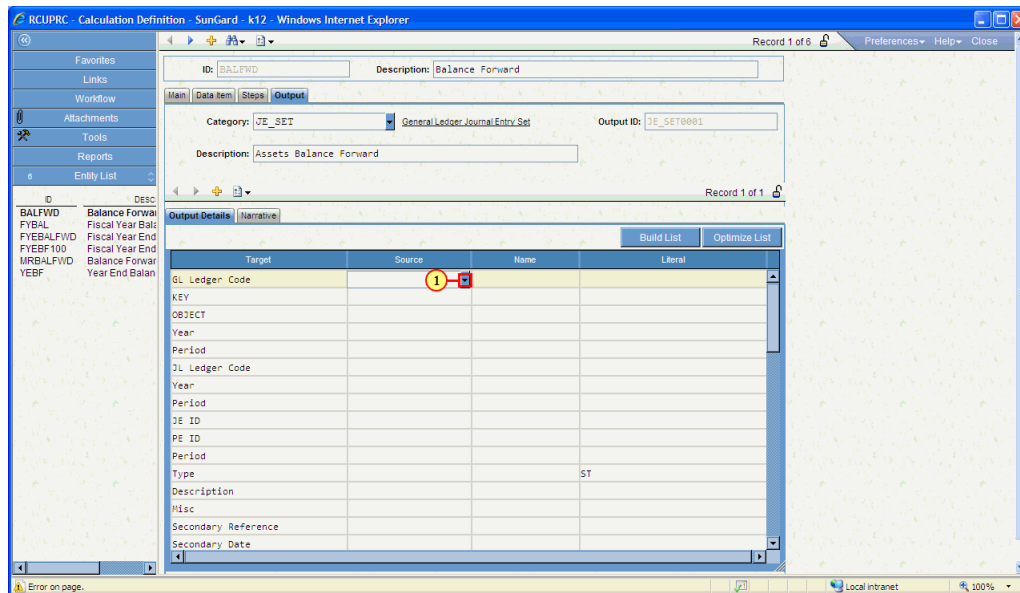
Source: We have the option to choose from Data Items, Steps, or a seed value.

Name: The option for the name column is driven by the selection in the Source column. If a data item is selected as the source then we have access to all of the items from the data items tab. If the source selected is a seed then you will have

access to all of the SYNO common Codes. If a Step is chosen as the source then you will have access to all of the calculations within that step.

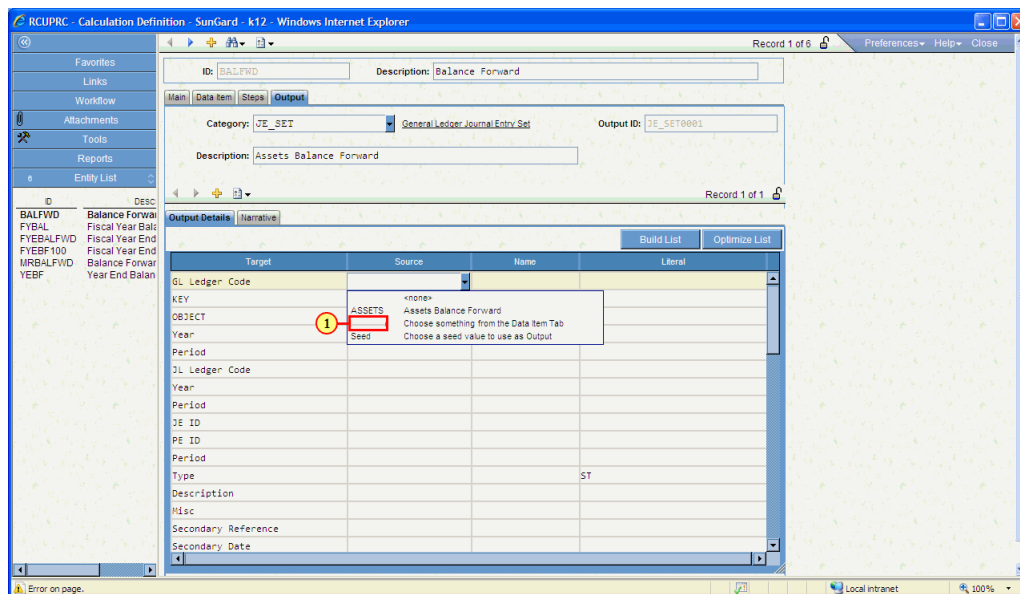
Literal: This field is used if you want to place a literal value in field in the Set.

1.1.48 RCUPRC - Calculation Definition



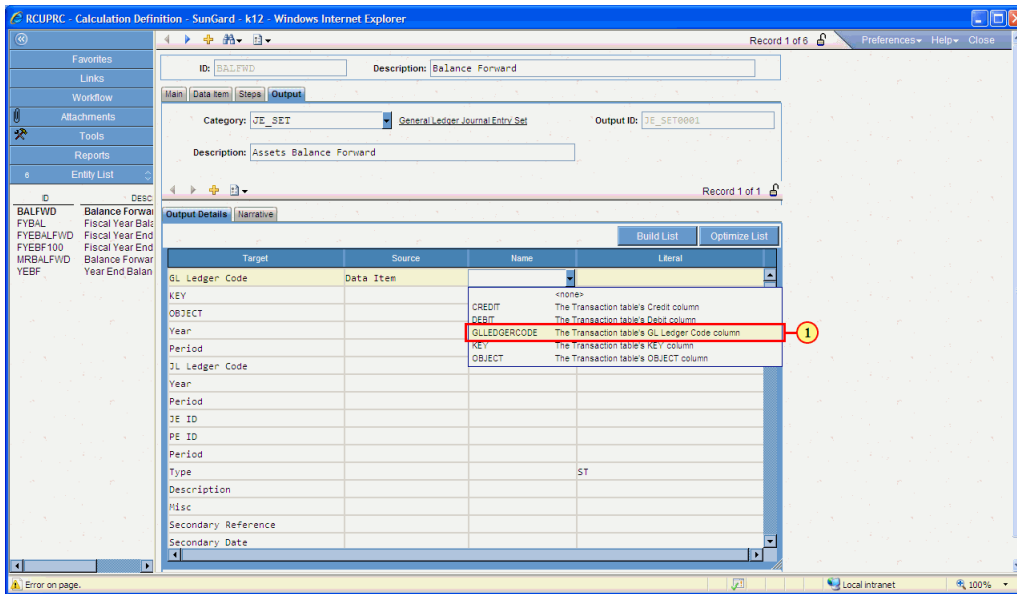
(1) Click on **Source Drop down** ▼.

1.1.49 RCUPRC - Calculation Definition



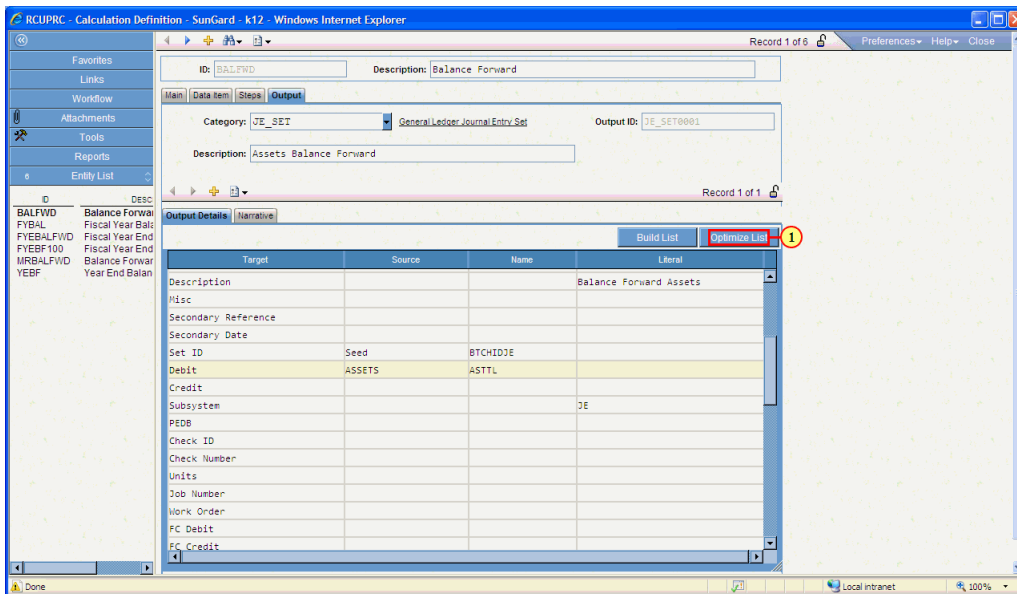
(1) The field is filled out.

1.1.50 RCUPRC - Calculation Definition



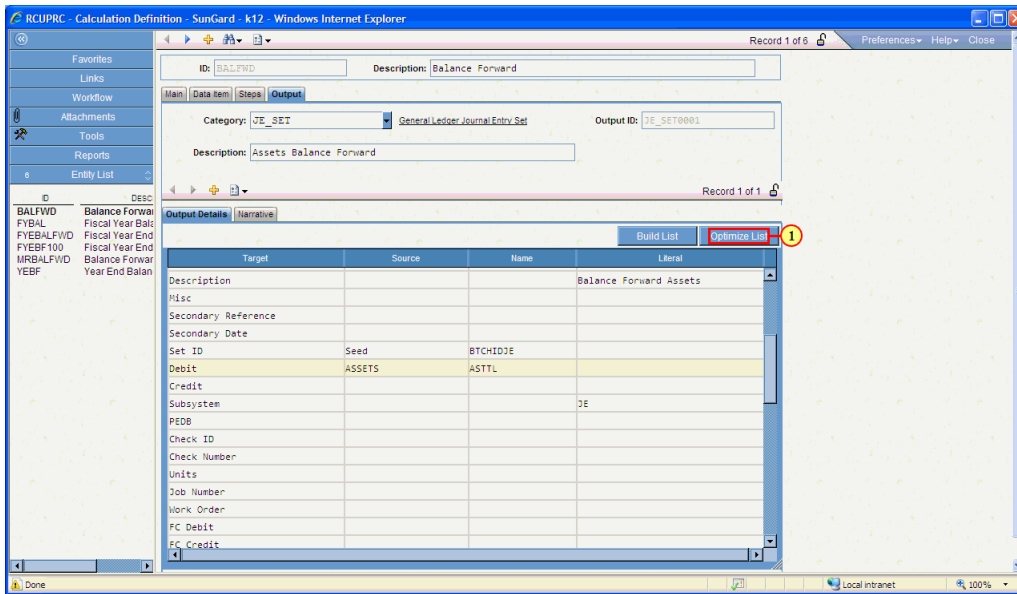
(1) Click on **GLLEDGERCODE** The Transaction table's GL Ledger Code column

1.1.51 RCUPRC - Calculation Definition



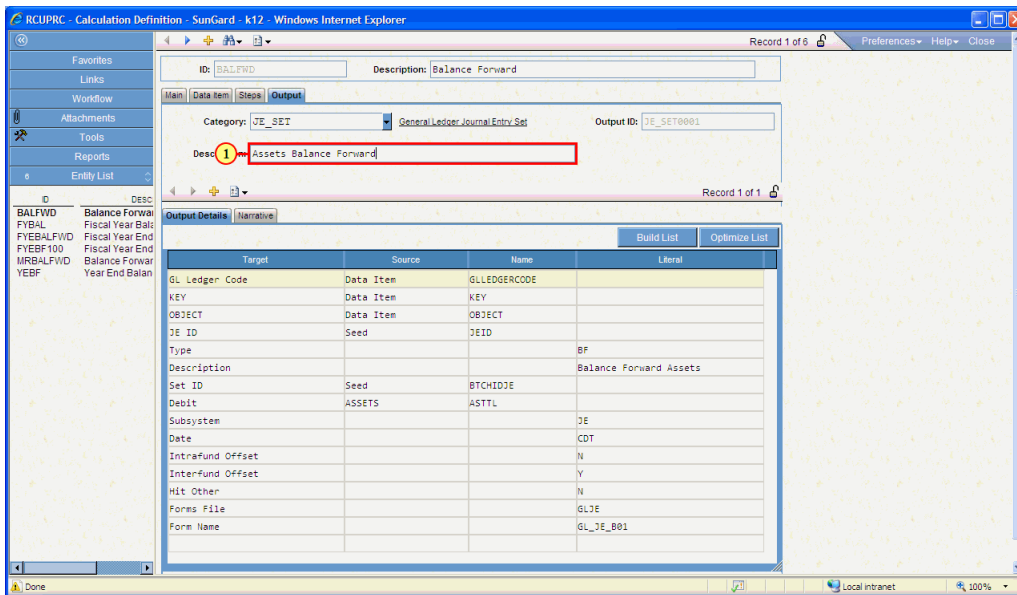
(1) **Click on the Optimize List button**

1.1.52 RCUPRC - Calculation Definition



(1) Click on the Optimize List button

1.1.53 RCUPRC - Calculation Definition



(1) Note:

After selecting optimize list the rows of fields in the output details will be reduced to just those fields that have values in them.